

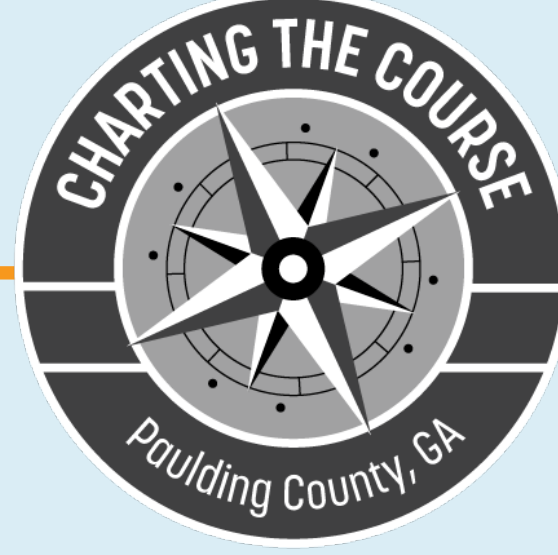


PAULDING COUNTY

Comprehensive Transportation Plan & Comprehensive Plan Updates



Comprehensive Transportation Plan



Comprehensive Plan

WHAT IS A CTP & WHY IS IT IMPORTANT?

The Comprehensive Transportation Plan (CTP) is:

- A detailed county-wide, long range (30 year) multi-modal transportation plan that assesses the existing and future transportation needs for roadways, bicycle and pedestrian facilities, transit services, and freight considerations
- Coordinates local and regional transportation expectations
- Fiscally constrained against reasonable funding projections
- Short-term action plan and long-term vision of projects, policies, and programs

This is important because it:

- Creates a clear roadmap of local priorities
- Positions projects for state and federal funding
- Supports the Comprehensive Plan and responsible growth

WHAT IS A COMP PLAN & WHY IS IT IMPORTANT?

The Comprehensive Plan (Comp Plan) is:

- A long-range (10 to 20 year), high-level look at Paulding County with a focus on land use and growth
- Updated every 5 years
- Required by the Georgia Department of Community Affairs to maintain Qualified Local Government (QLG) status

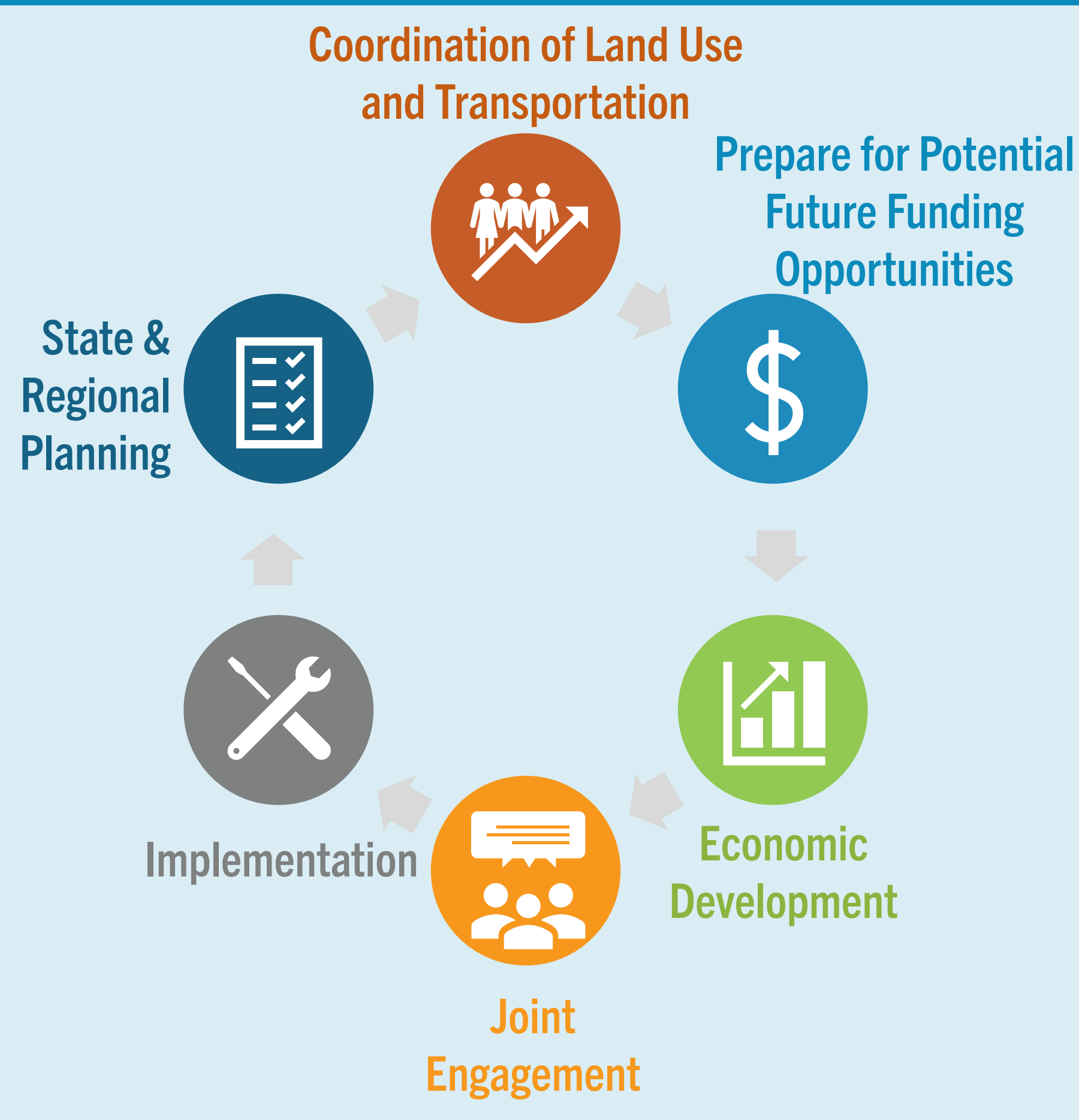
The Update will focus on:

- Report of Accomplishments
- Data/trends from the last five years
- Needs and opportunities
- Refining the future development map (land use)
- Community Work Program

This is important because it:

- Guides the County's planning and development projects
- Identifies priority projects for the next 5 years
- Maintains state funding eligibility

WHY DO THEM AT THE SAME TIME?



JOINT PROJECT SCHEDULE

