



PAULDING COUNTY

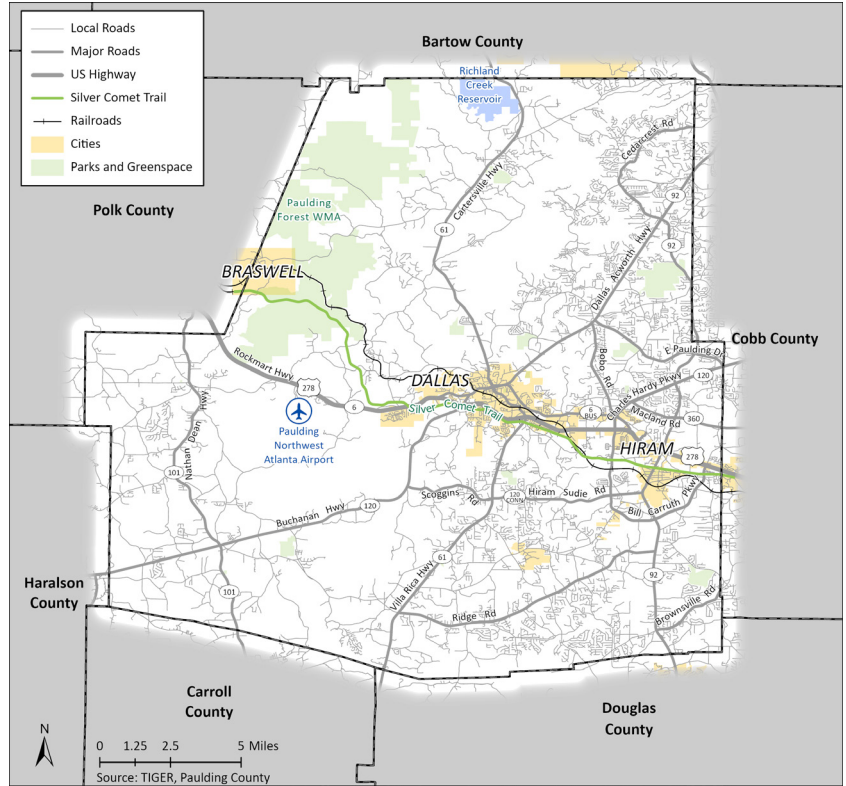
Comprehensive Transportation Plan & Comprehensive Plan Updates

PLANNING OUR FUTURE

Paulding County, in collaboration with the cities of Dallas, Hiram, and Braswell, is charting the course for the future!

During 2022, the County and its municipal partners are updating both their Comprehensive Transportation Plan (CTP) and Comprehensive Plan. These two plans play a vital role in moving forward the community's vision for the future and facilitating mobility and growth that is well managed, sustainable, and enhances quality of life.

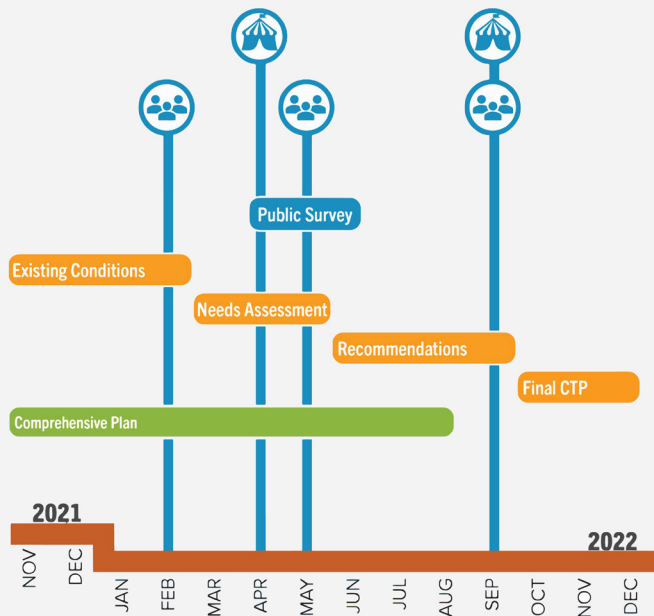
Paulding County currently has the 13th highest population of Georgia counties. It was the second fastest growing county by percentage in Metro Atlanta over the last decade. By 2050, it is anticipated that Paulding County's population will exceed 250,000.



PROJECT TIMELINE

SCHEDULE KEY

- Public Meeting
- Pop-Up Event
- Both CTP + Comp Plan
- Comprehensive Transportation Plan
- Comprehensive Plan





PAULDING COUNTY

Comprehensive Transportation Plan & Comprehensive Plan Updates

OVERVIEW

Comprehensive Transportation Plan Update

The CTP will provide an updated guide for future transportation investments throughout Paulding County (including the cities of Braswell, Dallas, and Hiram). The CTP update will:

- Examine all modes of transportation, including vehicle, bicycle, pedestrian, freight, and transit.
- Identify how transportation needs through 2050 can be best accommodated.
- Recommend short, mid, and long-range projects, along with the key partners and stakeholders that are integral to project implementation.
- Serve as a basis for future local, regional, state, and federal funding investments in Paulding County's transportation network.
- Complement and integrate with the Comprehensive Plan, serving as its Transportation Element.

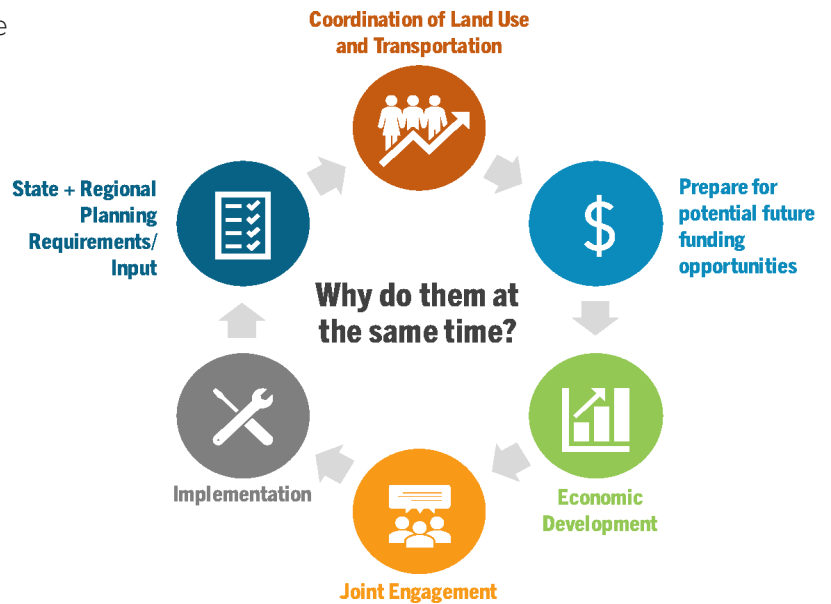
Comprehensive Plan Update

The Comprehensive Plan aligns Paulding County and its cities' growth and development initiatives under one common vision. The Comprehensive Plan includes both a long-term vision and goals (for a 20-year planning horizon) and a short-term work program (to be completed over the next five years). This limited plan update includes:

- A reassessment of Needs and Opportunities,
- Completion of the Report of Accomplishments for the 2017-2021 Community Work Program,
- Creation of the 2022-2027 Community Work Program, and
- A re-visitation of the Land Use Element and Future Development and Future Land Use maps.

PLANNING PARTNERS

- City of Dallas
- City of Hiram
- City of Braswell
- Atlanta Regional Commission
- Atlanta-Region Transit Link Authority (ATL)
- Georgia Department of Transportation
- Georgia Department of Community Affairs
- Northwest Georgia Regional Commission



Growth and development of land drives new transportation demand, but the construction of transportation infrastructure can also drive growth into new areas. Integration of both planning efforts –the Paulding County CTP and Comprehensive Plan–ensures that the impacts of these plans are considered concurrently.

YOUR INPUT IS CRITICAL! It is important that we hear from you on how you envision Paulding County charting the path forward. Throughout the planning process, there will be many ways to participate and share your hopes and concerns for the future! *Visit the project website to learn more and sign up for project updates.*



CONNECT
www.pauldingchartingcourse.com
info@pauldingchartingcourse.com